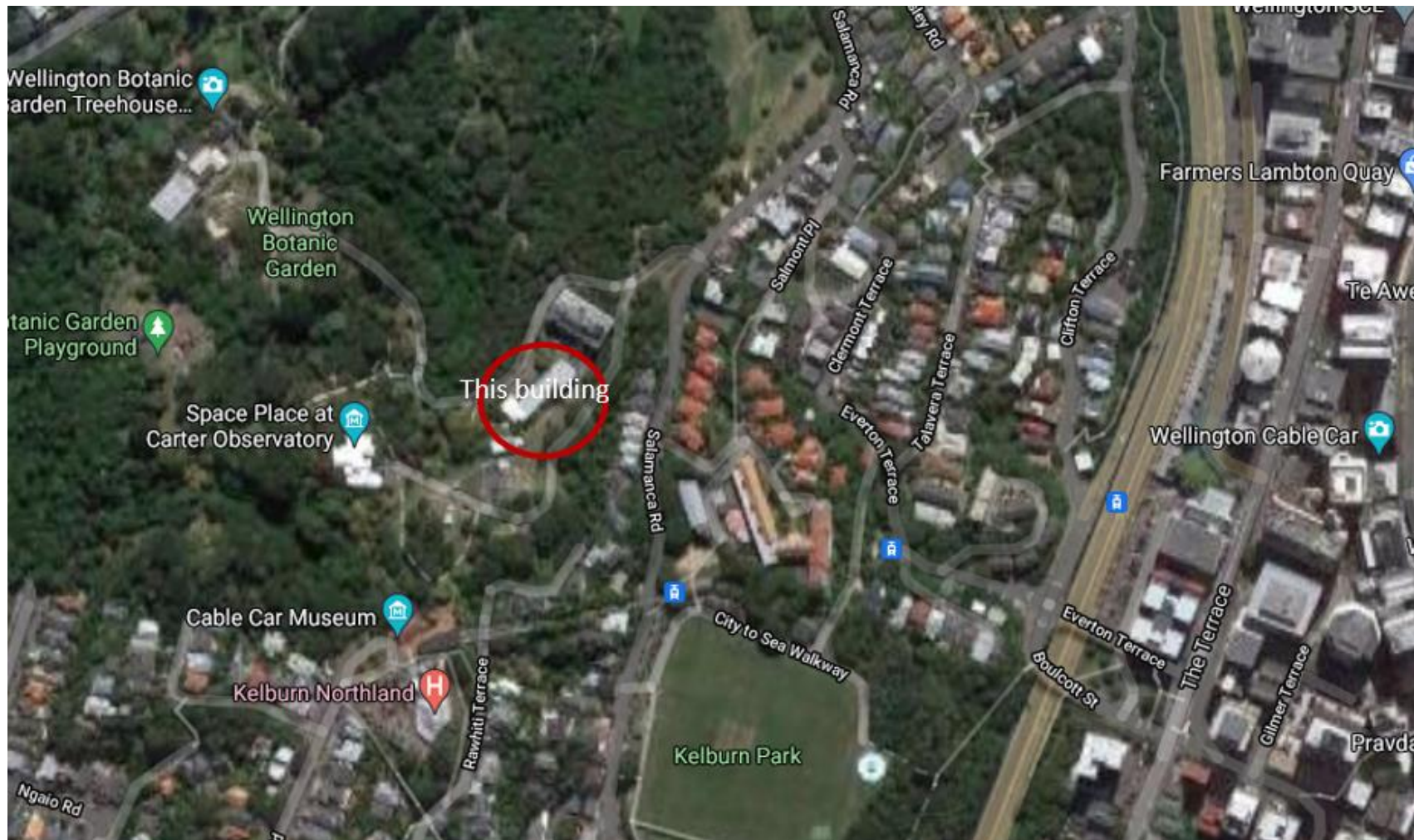


Directions

From Google Maps:





Turn off Salamanca Road and walk toward the MetService building (seen here) and continue past it toward the left.



This path



The main entrance is to the left. Go upstairs to room 232.

Short term parking may be available in this area. Write your details on the whiteboard just inside the main entrance.

There is parking at the top of the Cable Car in a Wilson's car park and also on Kelburn Parade with the first 2 hours free. Entering the Botanical Gardens take the path veering to the right and follow it down (2 mins) until you come to the Salamanca Group Building.